



*IP PA System
Software Package*

904 84101

User Manual

CONTENT

| | |
|--|-----------|
| Summary | 1 |
| Features | 1 |
| Function list | 1 |
| Software Installation | 3 |
| Operate Environment | 3 |
| Installation Steps | 3 |
| Software Operation | 4 |
| Software Registration | 4 |
| Server Software Operation Description | 5 |
| Software Login | 5 |
| Overview | 5 |
| Terminal Status | 6 |
| List View | 6 |
| Grid View | 7 |
| Map View | 7 |
| Scene View | 9 |
| Video View | 10 |
| Scheduled Tasks | 11 |
| Add Scheme | 11 |
| Add Tasks | 11 |
| Real-time tasks | 17 |
| Media Library | 19 |
| Record | 19 |
| Report | 20 |
| Basic settings | 20 |
| Terminal management | 20 |
| Zone management | 24 |
| User management | 25 |
| Role management | 27 |
| System settings | 28 |
| Multi-server | 29 |
| Advanced settings | 30 |
| SDK Configuration | 30 |
| Version information | 30 |
| Backup/Restore | 31 |
| FAQ | 31 |
| Copyright statement | 32 |

Summary

Siera IP PA and Intercom System Software takes advanced IP Audio technology which is a pure digital transmission system by transmitting the signal in data packet on the LAN and WAN. The system solves the limitation of the transmission distance, susceptible to interference and such problems in traditional intercom and PA systems. The construction of the system is clear that just connecting the terminal to the computer can make up the strong digital communication system. It integrates the computer network, intercommunication and public address without separate wiring to each interface.

Features

- **Function:** it covers the intercom and PA system functions such as audio streaming on-demand service, budget management, authorization management and so on.
- **Transmission:** audio transmission distance can infinitely extend and it can be operated over LAN and internet. The system supports the significant application in a large scale, such as the centralized control room from the main campus to sub-campus, from the headquarter to the branch office, to realize the fast and reliable information communication. The program take up only 0.1Mbps of bandwidth per channel.
- **Tone quality:** Terminal output level close to CD quality (44.1K, 16.bit). It is more suitable for music enjoyment and listening training, such as Colleague Entrance Examination, CET4 and CET6 listening part. All the listening material can be clearly played and the candidates will not be puzzled by the vague sounds.
- The tone quality is clear and smooth, not disturbed by external electromagnetic waves. The minimum bandwidth is only 34kbps. The calling delay in LAN is less than 30 millisecond.
- The transmission distance can be infinitely extended. With the network, it can realize the intercom and multiparty call and build information and communication system in wider scale.
- It adopts digital audio processing technology and the audio width is 7KHz. The system has the function of echo cancellation and noise reduction, and realizes full-duplex conversation, multiparty calling and area-broadcast.
- Confidential communication, special audio coding format, encryption processing, prevent eavesdropping;
- It is simple to adjust the communication scale, and it can complete the system expansion with increasing the terminal

Function list

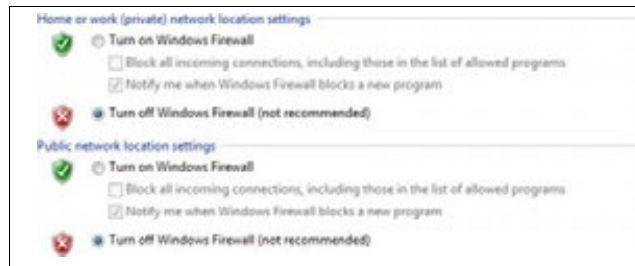
| Function | Sub-function | Description |
|---------------|--------------------------------|--|
| Call | ● Two-way earphone call | Connect an external earphone to talk in high noise environment or don't want to influence others. |
| | ● Single key call | A quick call to a target terminal; every terminal can set an independent target. |
| | ● Number keys call | Through numerical keys to randomly call any terminals. |
| | ● Call ringtone | With such tones of "call set up", "call busy" and "hang up" can be set up(only supportive by the terminals carrying a SD card). |
| Call Answer | ● Auto answer | The automatic answer can be set on the terminal at 1 time after the ring. |
| | ● Manual answer | he ring continues on the terminal until there is a manual answer. |
| Call Transfer | ● Busy transfer line | The call can be automatically transferred to another terminal if the target line is busy. |
| | ● Power Transfer off | If the target is powered off or out of connection, the call will be automatically transferred. |
| | ● No answer transfer | 。 If the call has not been answered in a specified times of ringtones, it will be automatically transferred. |
| | ● Manual transfer | Received call can be manual transfer to anyone terminal, and end the present call. |
| | ● Breakdown call | The administrator can abruptly break down an ongoing call. |

| | | |
|--|---|--|
| <ul style="list-style-type: none"> ● Caller Display ● Incoming playing | <p>ID</p> <p>call</p> | <p>To display the caller's ID and review the missed calls and incoming calls; Support English.</p> <p>Automatically playing the incoming call terminal name through the internally loudspeaker.</p> |
| <p>Zone broadcast</p> | | <p>◦ Broadcast to a single or multiple partitions via IP network paging microphone. The server software can remotely adjust the volume of each</p> |
| <p>Emergency broadcast</p> | | <p>Play the pre-recorded speeches to a specified terminal through IP paging microphone.(Multiple voice is optional).</p> |
| <p>Monitoring</p> | | <p>The terminal that built-in microphone can monitor the sound conditions around the terminal in the main control room.</p> |
| <p>Background music(BGM)</p> | | <p>The loudspeakers of the terminal can play background music and the music will stop during conversation; live broadcast, timing broadcast, trigger broadcast are available.</p> |
| <p>External control</p> | | <p>The terminal short circuit output can control the electrical door lock; The terminal short circuit input can connect the external red emergency button.</p> |
| <p>Digital record</p> | | <p>The system can automatically record the data of conversation.</p> |
| <p>Hubbub alarm</p> | | <p>If it has detected a screaming or a tumult, the terminal will automatically deliver the alarm to the center service software.</p> |
| <p>Extension Interface</p> | <ul style="list-style-type: none"> ● Integrate various phone ● Integrate fire/PA system ● Linkage CCTV | <p>Integrated with fixed phone: Connected with IP telephone PBX can make two-way conversation (with voice prompts);The fixed telephone can broadcast to the intercom system (including the partitions and all zones); Integrated with the VOIP telephone: Interworking with VOIP phone. It's compatible with SIP protocol and VOIP system;</p> <p>To be comprehensively compatible with IP PA system with the function of timing and live broadcast.</p> <p>To broadcast through the PA system with the pre-programming information according to the alarms from the firefighting center.</p> <p>We can offer SDK secondary develop package, the call switch can be controlled by CCTV or the monitor screen can be automatically switched during talking.</p> |
| <p>Scale application</p> | <ul style="list-style-type: none"> ● Cluster server (for the large scale use) ● Single server (for medium scale) ● Without server ● (for small scale) | <p>To adopt multi servers to manage terminals to reduce the risk of the malfunction of the network; serving for the interprovincial applications over a large scale where as much as 100000pcs terminals is used at one time (a cluster of 100 pieces of servers with 1000 pieces of terminals loaded on each server).</p> <p>To manage all the terminals, and its application scale is up to 1000 pieces of terminals. (each server can load 1000 pieces of terminals)</p> <p>Be independent from the server to make the basic communication; Assist some independent zone to take emergency measures when its connection to the server breaks down; Its application scale is up to 100 pieces of terminals.(small scale)</p> |

Note: all above functions need to complete with the appropriate model terminal.

Software Installation

Warning: Some firewall software may effect IP network audio system software operation, so please close all the firewall software(including Windows XP built-in firewall) to debugging broadcasting. After debugging, then set the firewall(exception) to allow audio system software access to network.



Operate Environment

- ◆ CPU: above Intel I3 series processor
- ◆ Memory: 4G or above
- ◆ Hard disk: 500G hard disk or above
- ◆ Network card: 100M/1000M self-adaption

Installation Steps

This software support Windows 7/8/10 (including) above operating system, and not support Window XP operating system. **Install Server Software**

| Step | Operation | Diagram |
|------|--|---------|
| 1 | Confirm the computer has 10/100M network card and the drive program is correctly installed. | |
| 2 | <p>In the TCP/IP setting of network can be set to automatically get the IP address.</p> <p>Note: if the network didn't set DHCP service, please consult the network manager to get the available fixed IP.</p> | |
| 3 | <p>Download the Installation Package software and double click software program to pop up welcome interface, then click the NEXT.</p> <p>Choose the installation path, click the NEXT till the installation is finished and the icon shows on the desktop.</p> | |
| 4 | Right click the shortcut icon, and choose "attribute"->"compatibility", click the "run as administrator". | |

Software Operation

Double click icon "Paging Console, please select "Start on Boot" if the server automatically run after turning on the computer. If only need to automatically run some servers, please select "auto", and manually click to start. Click set to check the usage status of the server interface.



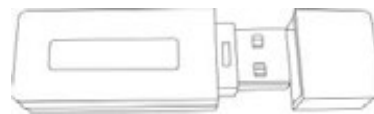
- Core server The main function is to handle the communication exchange between devices.
- Application server The main function is to handle the business process of the system.
- Transfer server It is compatible with the inherent NAS devices.
- WEB front-end server the main function is to present the WEB page for browser.
- WWEB back-end server It acts as the bridge between the WEB page and back-end service.

IP address: when there are multi -block networks, it needs to bind one for the IP intercom and PA system.

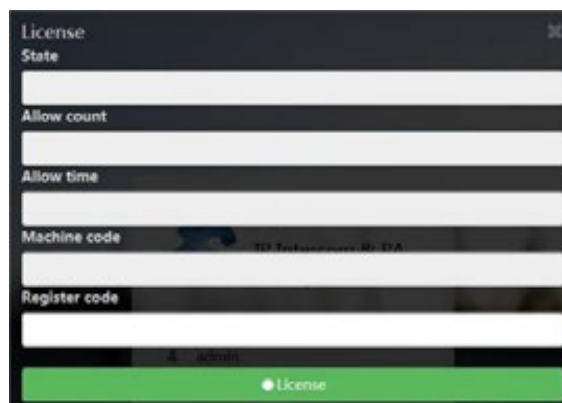
Software Registration

User can authorize to use the official version server software through serial number or dongle.

Dongle: directly insert dongle to the USB (drive-free), and then reboot the server software.



License: through the WEB to access the server IP address, the system will automatically pop up the registration information. Send the machine code to the manufacturer to get the license for the usage of the official server software.



Note: the server must be registered before normal operation.

Server Software Operation Description

Software Login

Input the IP address in the browser. Input the user name and password in the login window(default as admin), click login to enter the server web page.

A screenshot of a web login interface. It features three input fields: 'Username' with a person icon, 'Password' with a lock icon, and 'Language: English' with a dropdown arrow. The fields are arranged vertically and separated by thin horizontal lines.

Note:if the login web page is abnormal, the browser version is low and you need to change or update the browser.

Overview

Successfully login, the main interface presents:

- 1) Running status of terminal: count down the data of the online and offline devices.
- 2) Planned tasks: count down the task quantities of the timing, alarm and button press in the current planning tasks.
- 3) System resource usage status: real-time display of server resources are being used.



Terminal Status

List View

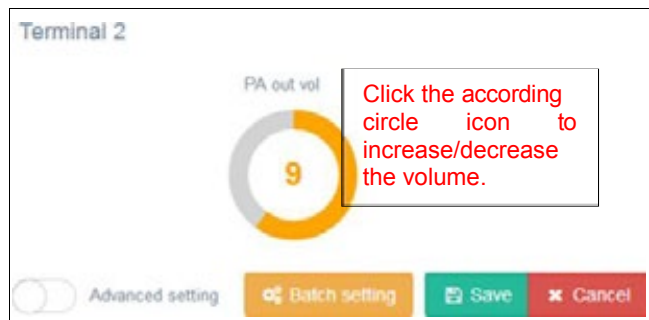
The interface presents in list and the list view can show the zone list, terminal login status (online, offline) and task status

| State | ID | Type | Name | IP | Local IP | Scheduled Tasks | Volume |
|-------|----|------|-------------|---------------|--------------------|-----------------|--------|
| ● | 1 | XC | Terminal 1 | 192.168.4.104 | 192.168.4.104.6070 | Idle | 9 |
| ● | 2 | XC | Terminal 2 | 192.168.4.104 | 192.168.4.104.6002 | Idle | 9 |
| ● | 3 | - | Terminal 3 | 0.0.0.0 | 0.0.0.0 | Idle | 9 |
| ● | 4 | - | Terminal 4 | 0.0.0.0 | 0.0.0.0 | Idle | 9 |
| ● | 5 | - | Terminal 5 | 0.0.0.0 | 0.0.0.0 | Idle | 9 |
| ● | 6 | - | Terminal 6 | 0.0.0.0 | 0.0.0.0 | Idle | 9 |
| ● | 7 | - | Terminal 7 | 0.0.0.0 | 0.0.0.0 | Idle | 9 |
| ● | 8 | - | Terminal 8 | 0.0.0.0 | 0.0.0.0 | Idle | 9 |
| ● | 9 | - | Terminal 9 | 0.0.0.0 | 0.0.0.0 | Idle | 9 |
| ● | 10 | - | Terminal 10 | 0.0.0.0 | 0.0.0.0 | Idle | 9 |
| ● | 11 | - | Terminal 11 | 0.0.0.0 | 0.0.0.0 | Idle | 9 |
| ● | 12 | - | Terminal 12 | 0.0.0.0 | 0.0.0.0 | Idle | 9 |
| ● | 13 | - | Terminal 13 | 0.0.0.0 | 0.0.0.0 | Idle | 9 |
| ● | 14 | - | Terminal 14 | 0.0.0.0 | 0.0.0.0 | Idle | 9 |

Terminal Volume Settings

- 1 Double click the terminal or volume settings to set the output volume of terminal broadcast. And click the according circle icon to increase/decrease the volume. It will work after saving.

Note: turn on the icon “Advanced Setting” to set the intercom input and output volume, and the broadcast input and output volume.



- 2 **Batch Settings**

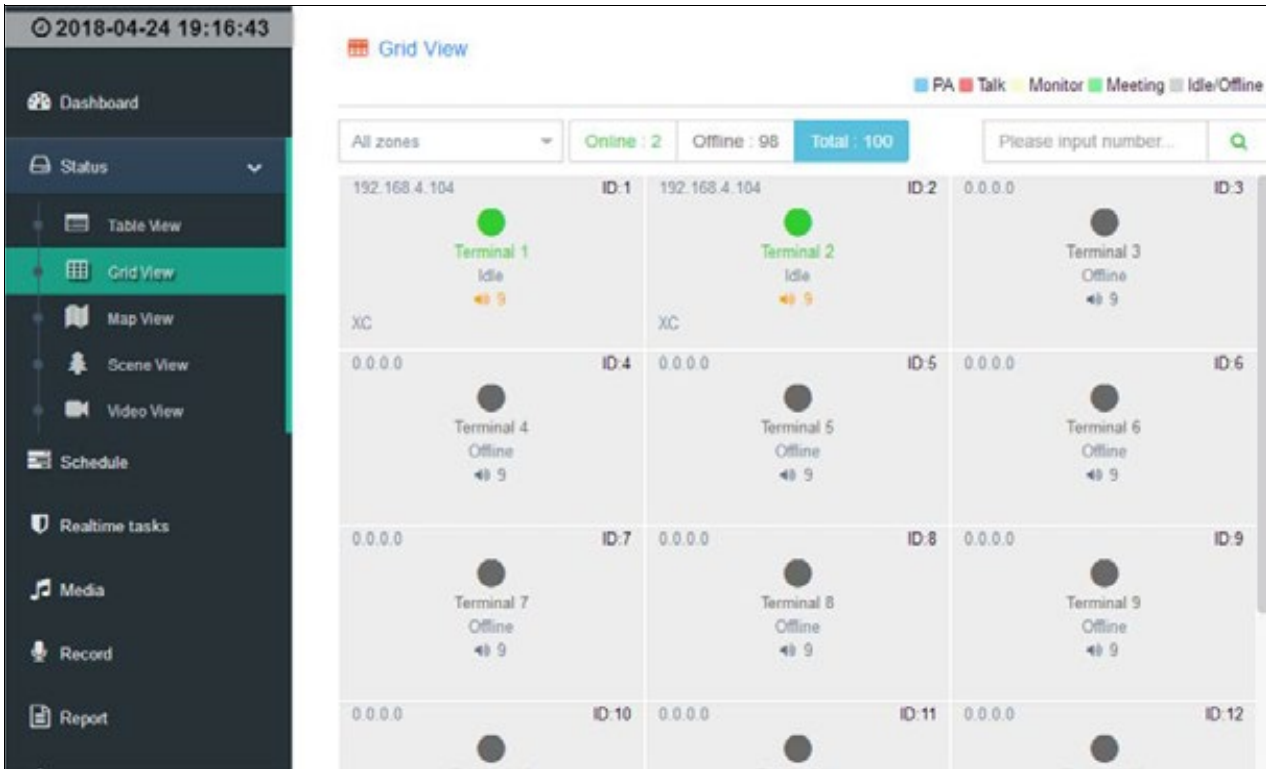
Click batch settings to select the target terminal, and then click the circle icon to set the volume. It will work after saving.

Note: the volume of all terminals will be the same after saving the batch settings.



Grid View

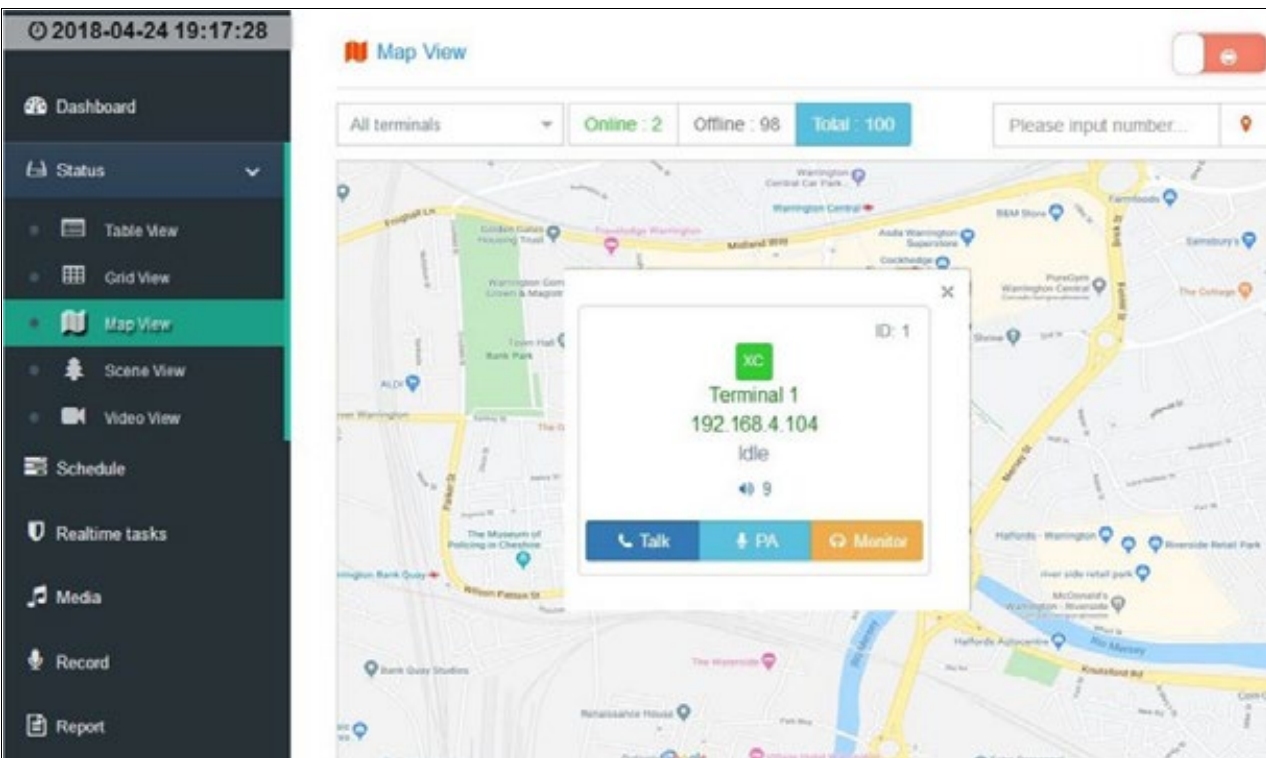
The interface presents in grid and the grid view can show the zone list, terminal login status (online, offline) and task status





- Terminal volume adjustment: Double click one terminal or click the volume icon to set terminal broadcast and talk intercom, the set way same as the above.

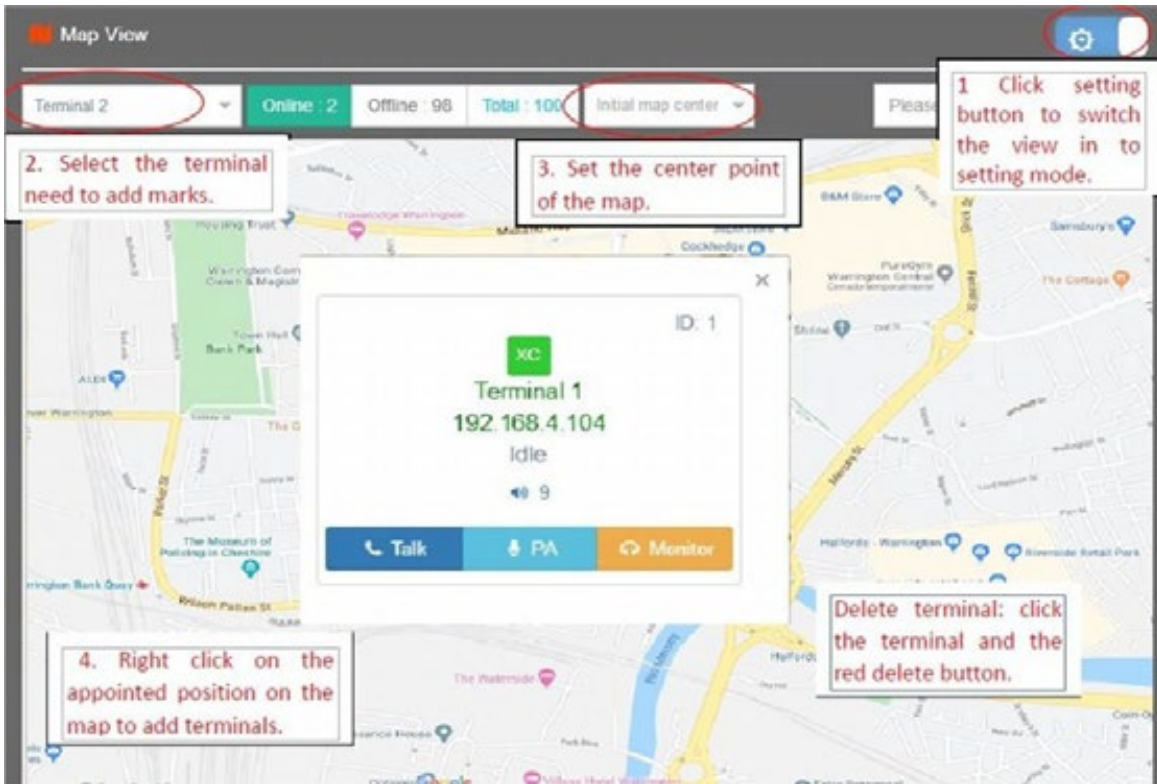
Map View



In map view, it can represent the terminal login position. In the map view, users can set block map or satellite map. And the users can mark the terminal on the map, and have a whole view of the terminal address.



Add terminal map marks

| Steps | Description |
|-------|---|
| 1 | Click the upright orange icon  to switch the view into setting mode. (the icon turn into blue ) |
| 2 | Select the terminal need to add the mark in terminal list, and the right click on the map to add the terminal in the according position. |
| 3 | Set the center point on the map; |
| 4 | Right click on the appointed position of the map to add terminals. |

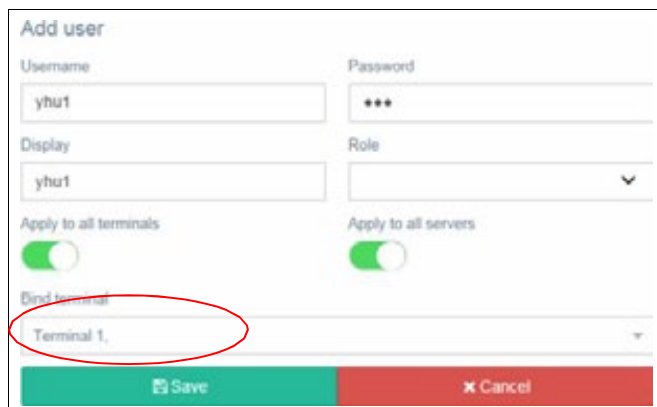


- Note:
- 1) mobile terminal mark position: click the appointed position after selecting the terminal in the terminal list.
 - 2) delete map mark: click the terminal and the red button  on the pop-up information bar.
 - 3) after finishing adding map mark, please click upright  turn off button to close the setting mode.

Initiate intercom, broadcast and monitoring

Click the terminal icon on the map to check the terminal status (online, offline) and task status

At the same time, it can initiate intercom, broadcast and monitoring. The initiator is the bound microphone by the control center in [basic setting] -[user management], as the right picture:

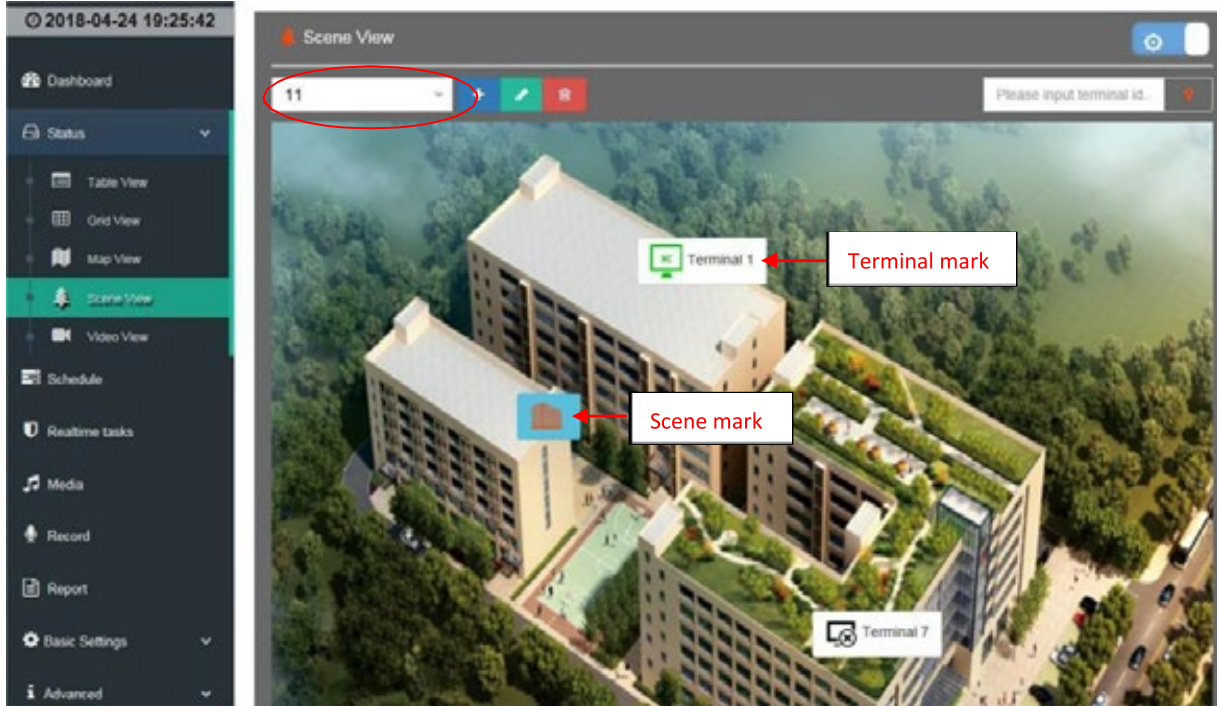


Scene View

In the Scene View, it can present the terminal login position. Users can select as the scene picture and mark the terminal or pictures.

Click the terminal mark on the scene map then check the terminal login status (online, offline), task status (intercom, broadcast), at the same time, it can initiate intercom, broadcast monitoring and so on functions (intercom, broadcast, monitoring initiator is the bound microphone in [basic setting] – [user management]).

It can add the scene mark on the scene picture. Click the scene mark to switch the scene. (click the upleft select button to select different scenes)

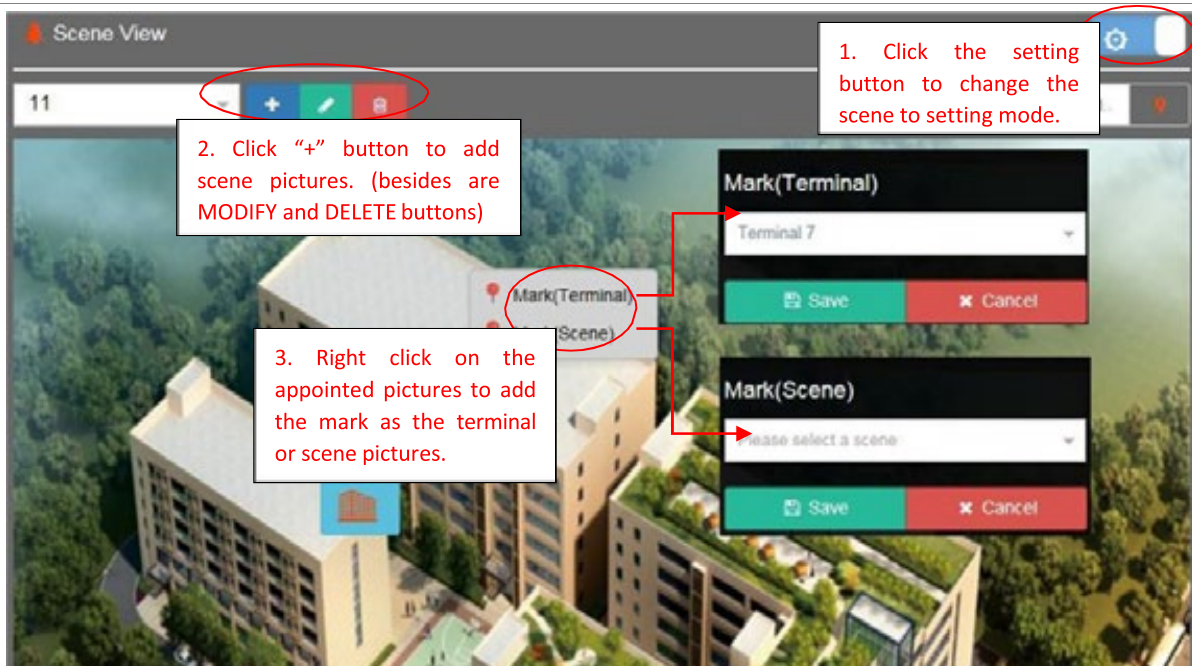


Self-defined scene mode

Steps

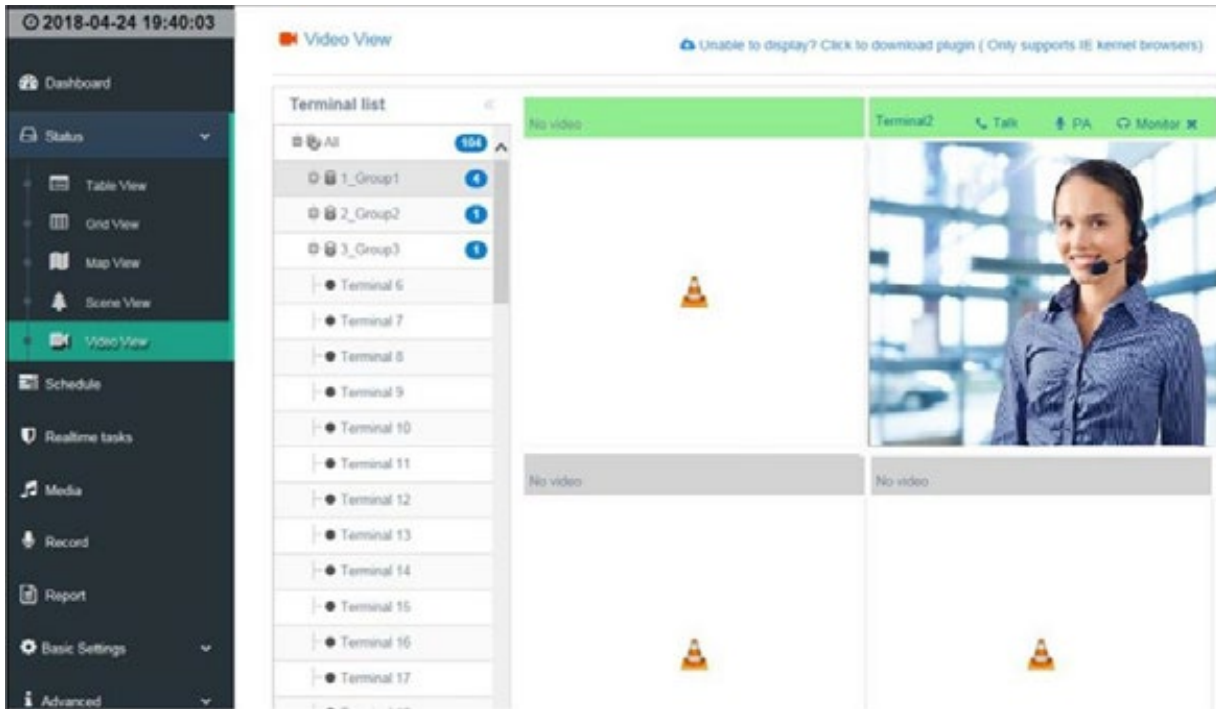
Description

- 1 Click upright orange icon to change the scene to setting mode (the icon will be blue)
- 2 Click “+” button to add scene pictures. It can add more scene pictures as the request.
- 3 Right click on the appointed position to add the mark as the terminal or scene picture as the request.
- 4 **Please click the upright** to turn on the setting mode after finishing adding scene mark.



Video View

In the video view, it can check the bound terminal or environment camera video. In the video view, user can choose the large screen (large screen displays the current video), medium screen (four windows displays the current video), small screen (nine windows displays the current video). **Note: please set the bound video address in [basic information] – [terminal management] to check the terminal current video.**



How to bind terminal video

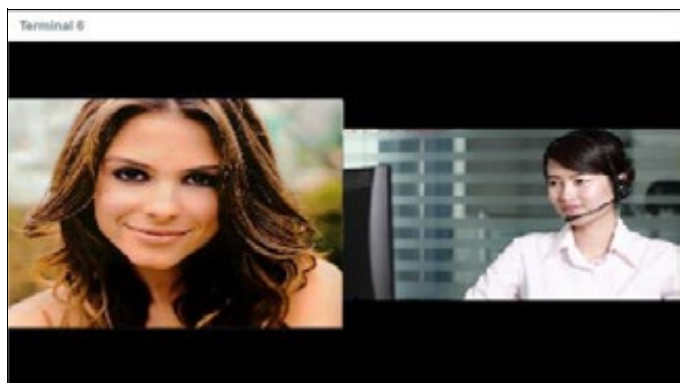
One terminal can bind many cameras, such the camera of the terminal and the video of the environment camera. The operation as following:

1. Click [Basic] – [terminal management] to select the terminal need to bind and double click to enter the terminal modifying interface.
2. Input the video address in the bound video bar . The video address format is `rtsp://username:password@IP address : port;` (e.g.: `rtsp://admin:123@192.168.1.101:554`)

if need more than one video address, please divided by \$ (eg. `rtsp://admin:123@192.168.1.101:554$rtsp://admin:123@192.168.1.102:554`)

After successfully binding the video, in the video view, when initiating the microphone of control center, the current video will automatically pop up.

Note: central MIC is 【 Basic 】 - 【 User management 】 bound terminal.



Scheduled Tasks

Users can set the broadcast, alarm, intercom, timing programs such tasks in the [scheduled list]. When the server receive the triggering signal from terminals, it will automatically execute operations without the manual intervention. For example: add one timing ring, when select “timing” in 【 add trigger 】 , it will set up the execution time. In the [add operation] to set as broadcast. When it comes to the scheduled time, the system will broadcast the task. Please see the following detailed operation:

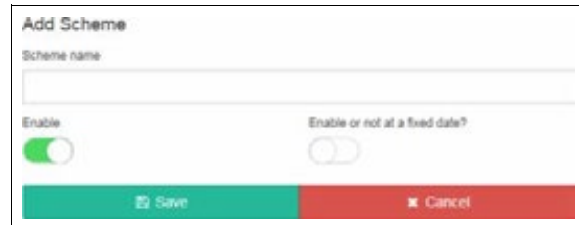


Add Scheme

Add scheme

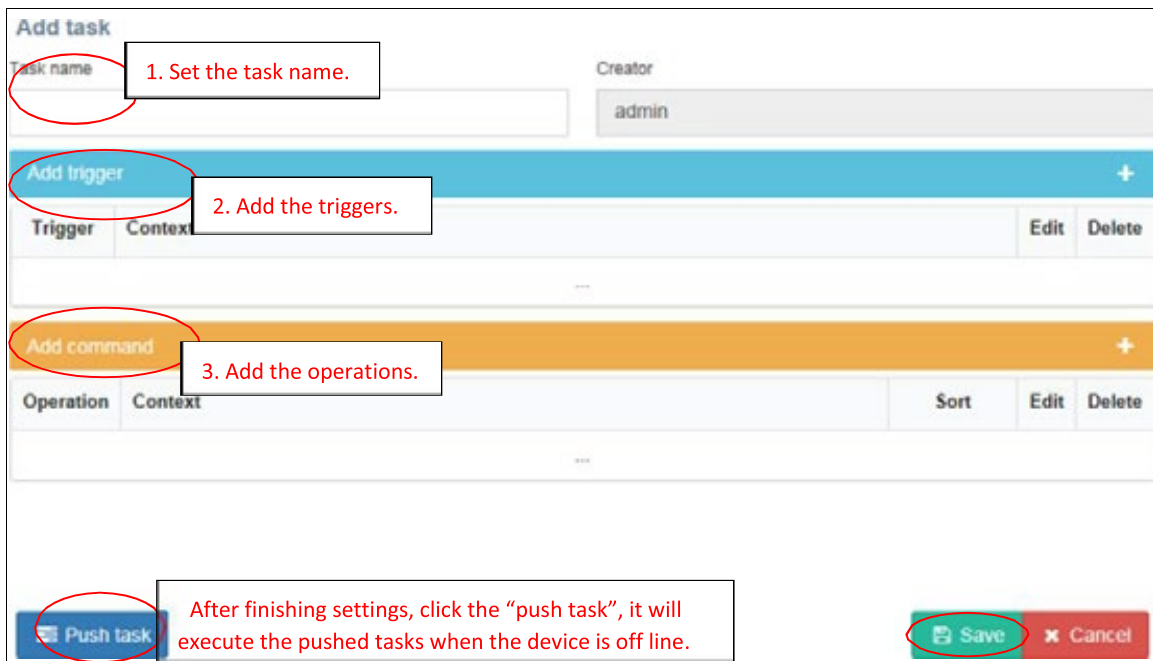
Click the scheme list + to add the scheme. On the pop-up task window to set the scheme name and execution time.

Note: click the icon + under the date to quickly set the time as current time.



Add Tasks

Click to add the task icon +, on the pop-up task window to set the task name , triggers and operation. It can add various operation at the same time for one task. For the task with the same time and level, it can set the play order.



Add triggers

| No. | Functions | Diagrams |
|-----|---|----------|
| 1 | <p>Add triggers: timing</p> <p>Timing task is to execute tasks at the appointed time.</p> <p>After setting the task time, period type, start time, and save. It will automatically run at the appointed time.</p> <p>Note: the start date must be within the start date range in the scheme.</p> | |
| 2 | <p>Add trigger: event</p> <p>Event type</p> <p>[Alarm]: The alarm trigger port is set up and the event terminal is checked. When the terminal alarm input is triggered, the specified event set in the "operation" is triggered, such as playing the specified note, triggering the dialogue, and so on, and the specific event is described in the "add operation" below.</p> <p>[key]: Set the terminal key number and check the event terminal. When the terminal presses the specified button, it triggers the specified event set in the operation.</p> <p>[Card]: Check the event terminal and trigger the specified event in the operation when the terminal is swiping.</p> <p>[Login]: Check the event terminal and trigger the specified event in the operation when the terminal lands on the server.</p> <p>[Talk]: Check the event terminal, when the terminal works, it will trigger the specified event set in the operation.</p> <p>[Monitor]: Check the event terminal, when the terminal is monitored, it will trigger the specified event set in the operation.</p> <p>[PA]: Check the event terminal, when the terminal initiates or receives the broadcast, it triggers the specified event set in the operation.</p> | |

Add operation

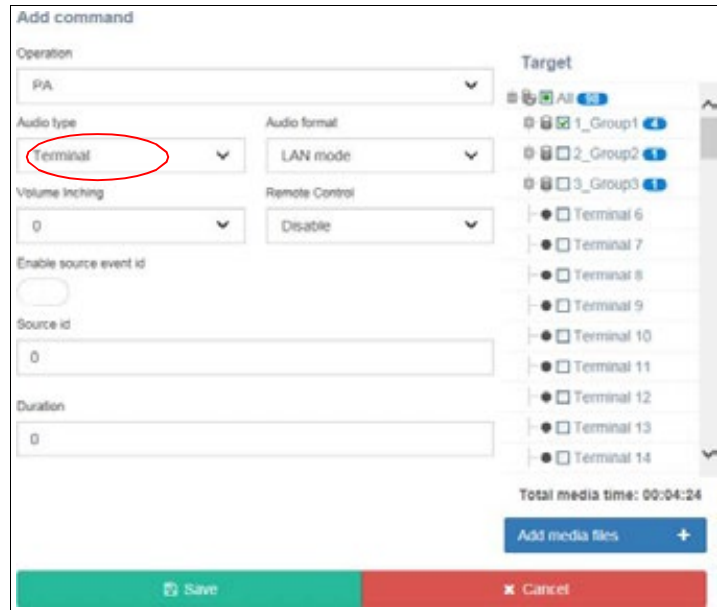
| No. | Functions | Diagrams |
|-----|--|---|
| 1 | Add operations: PA <p data-bbox="260 327 630 517">When the operation is set to broadcast, the task is to the guiding time, or the terminal specified event is triggered (the specified event is the type of event set in the trigger), and the specified audio is played.</p> <p data-bbox="260 539 549 566">1.1 audio source type: [file]</p> <ol style="list-style-type: none"> <li data-bbox="260 589 630 784">① Click on [add the media file] button to check the audio files that need to be added to the file list. (Note: the audio files in the list from the media library. Please add audio files in the media library ahead of time.) <li data-bbox="260 806 630 864">② Select the target terminal in the target area. <li data-bbox="260 887 630 1025">③ According to the actual situation, choose the audio data type. Wan mode is suitable for the unstable network, and only some terminals support it. <li data-bbox="260 1048 630 1216">④ Synchronous control strong cut: when the timing task runs, a short-circuit signal is generated at the same time, which is used to control the strong cut signal output of the terminal in the target area. <li data-bbox="260 1238 630 1377">⑤ Broadcast level: when multiple tasks meet the date of execution on that day, the highest level is executed first and the same level is arranged before execution. <li data-bbox="260 1400 630 1538">⑥ Duration: set the audio playback time in seconds. When it is set to 0, it represents no and plays according to the actual time of the file. | <p>The screenshot shows the 'Add command' dialog box with the following settings: <ul style="list-style-type: none"> Operation: PA Audio type: File Audio format: LAN mode Volume inching: 0 Remote Control: Disable PA level: 0 Duration: 0 Target: Terminal 9 (selected) The 'Save' button is highlighted in green, and the 'Cancel' button is in red. </p> |

Add operation: PA

1.2 audio source type: [terminal]

When the audio source type is terminal, when the trigger is triggered, the broadcast microphone will be broadcast to the target area. For example, set the sound source terminal number 2, and at the specified time, terminal 2 will broadcast the target area.

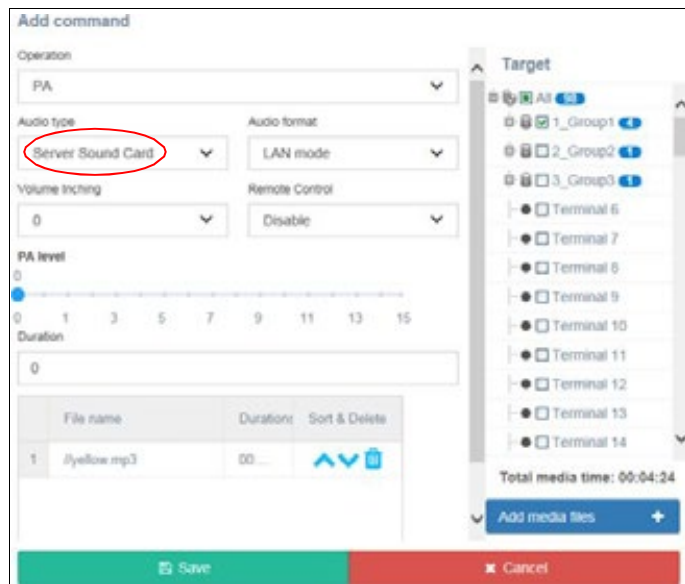
Enable event source number: the event terminal will be broadcast from the event terminal selected in the add trigger.



Add operation: PA

1.3 Audio resource type: 【 Server Sound Card】

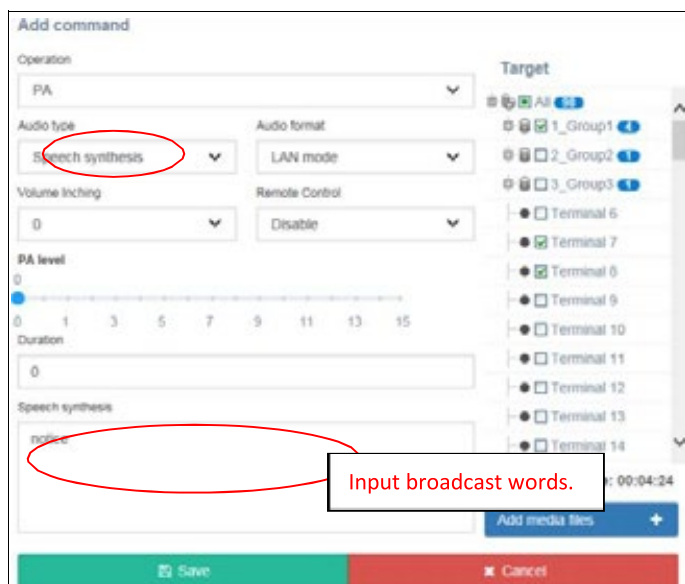
Collect audio resource of computer server sound card to broadcast.



Add operation: PA

1.4 Audio resource type: 【Speech Synthesis】

The words is converted to audio for broadcast, it is needed to input words in the dialog box.



2 Add operation: Talk

When operation is set as talk, and set start panel ID and end panel ID, set to automatically initiate monitor at the specified time (or triggered pointed event)

Note; terminal with panel, please input panel ID.

Duration: set talk time, in seconds. Talk can not be hung up during the set time range. If have not time requirements, it can be set to 0 according to the real situation.

Enable source event ID : check event terminal from added trigger and initiate talk to target terminal.

3 Add operation: monitor

When operation is set as monitor, and set start panel ID and end panel ID, set to automatically initiate monitor at the specified time (or triggered pointed event)

Enable source event ID: check the event terminal and monitor the target terminal.

Note : only the terminal with monitor function has the right to initiate monitor.

4 Add operation: delay

When terminal have not any operations, delay time.

5 Add operation: Command

5.1 terminal volume when event trigger execution.

Command type: volume

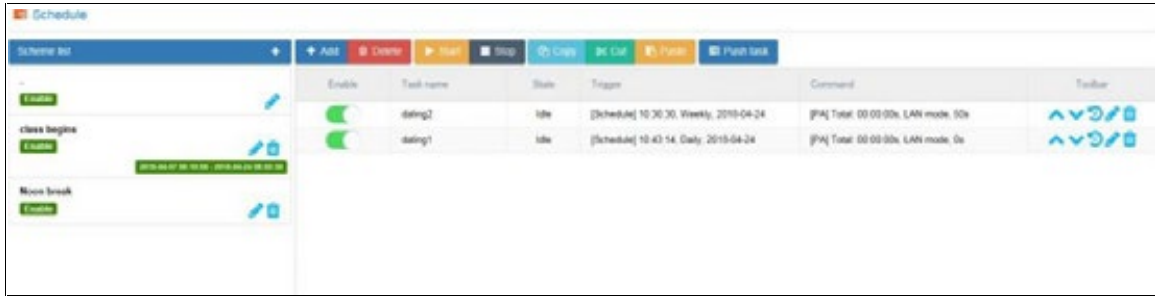
5.2 Command type: alarm

Set the corresponding device triggers close / open consensus time of alarm input port;

5.3 Command type: other

Reserved function


After added tasks, task state will be displayed in the task list, as the below picture shows:

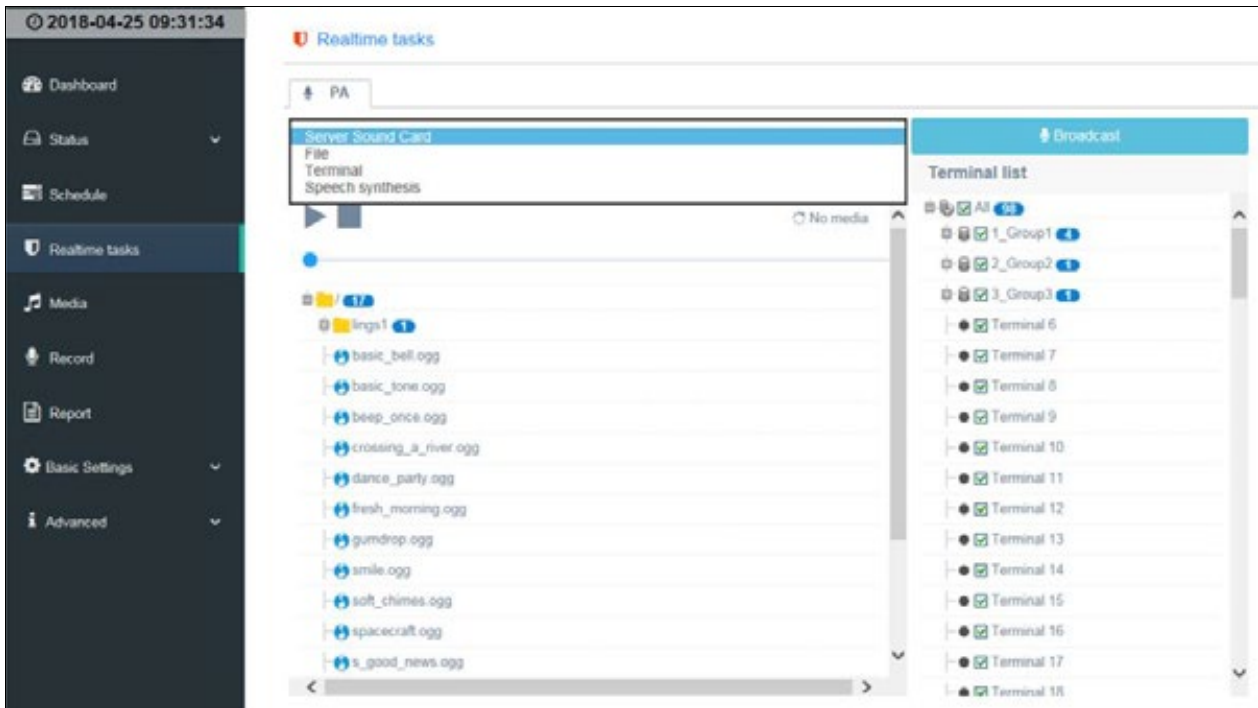


Enable or disable tasks/ modify or delete tasks/ start or stop tasks/ push task/ log

- **Disable tasks** Select tasks and click button in the toolbar to enable or disable tasks;
- **Modify /delete tasks** Select tasks and click button in the toolbar to modify tasks and button to delete tasks;
- **View task run log** Select task and click button in the toolbar to view task run log, task run time recorded by log and task type (manual execution/automatic execution);
- **Tasks ordering** Click to rank tasks;
- **Manual run /stop tasks** Select task and click to manual run task, click to manual stop running task.
- **Copy / paste** Select task and click (or right click to select copy/cut), and then select other scheme, click to paste copied/cut task.
- **Push task** Click button to view pushed task.

Real-time tasks

Real-time tasks support server sound card, file, terminal and speech synthesis broadcast. Select broadcast type and check target terminals, and then click  to initiate real-time broadcast.

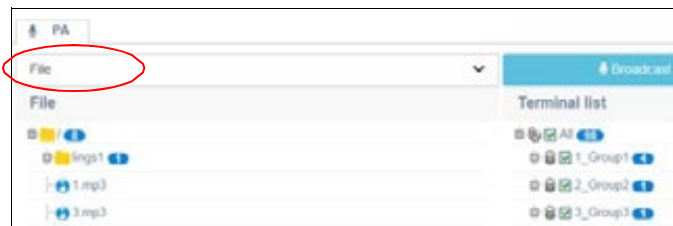


① Server sound card: collect computer sound card on the server to broadcast to target terminal.



② File: use media library file to broadcast to the target terminal.

Note: double click audio files to select.



③ Terminal: set terminal ID of initiating broadcast, this terminal initiate broadcast to target terminals.



④ Speech synthesis: input broadcast contents in the speech synthesis area, and broadcast to target zones by converting words to audio.



Server sound card: the “stereo mixing” sound card of Win 7 system is hidden by default, if enable “stereo mixing”, please refer to the following operate steps.

- 1 Open control panel and select “Hardware and Sound”.



- 2 Select “Sound”.

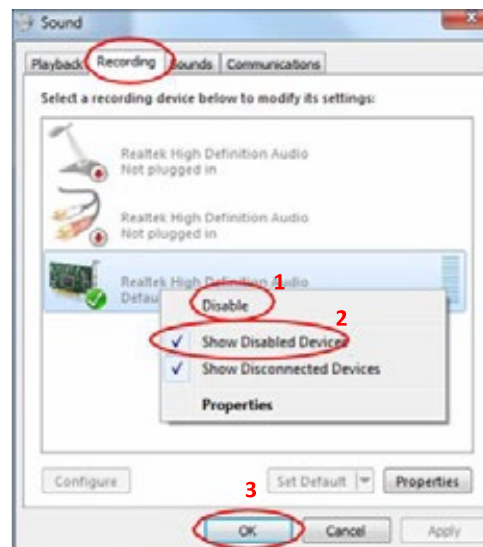


- 3 Select “Recording” parameters and modify settings:

① Right click on the “Recording” parameter blank, and check “ Show Disabled Devices”.

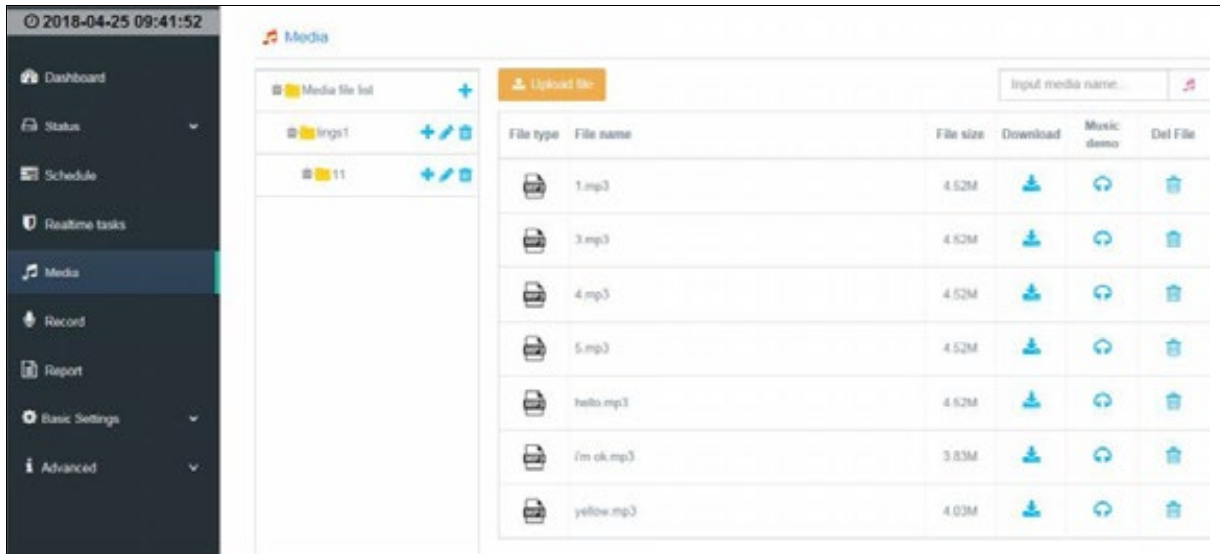
②Right click “stereo-mixing”, enable.

③Click “OK”



Media Library

Users can upload audio resource to media library as the audio resource of timing bellling, broadcast and real-time tasks. Audio resource of media library support download, online audition and delete.

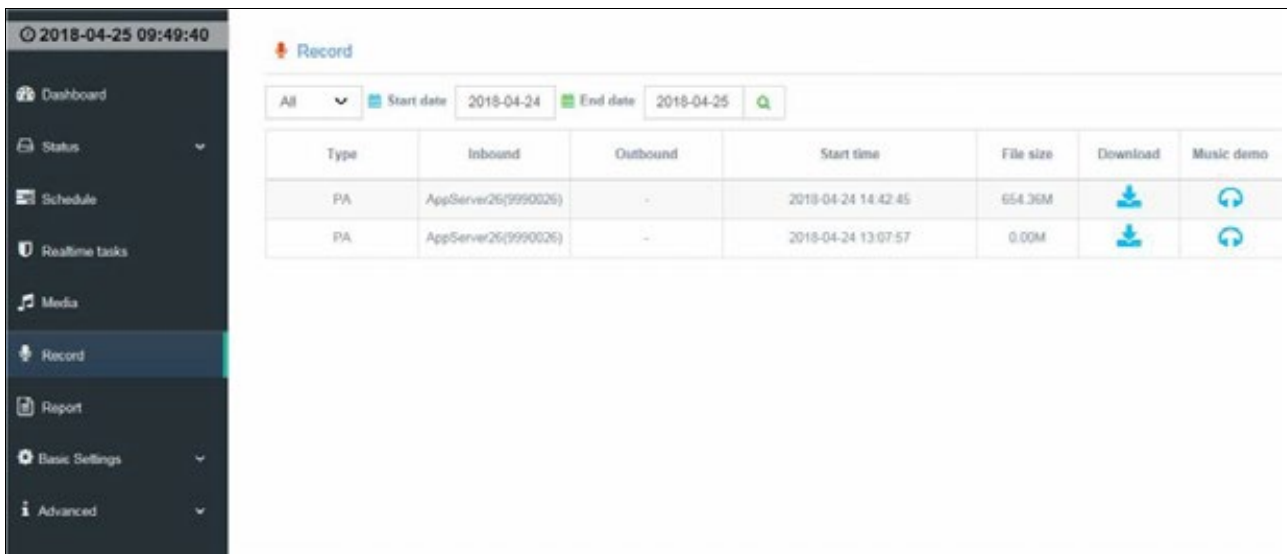


Add audio files

1. Click the "+" button beside "media file list" to build new files catalog.
2. Select pointed catalog, click "Upload file" button to upload audio files need to be added to the media library, file format supports MP3 and WAV.

Record

This server can save record files on the server in form of WAV format of intercom, broadcast, and monitor between terminals for downloading and reviewing later.

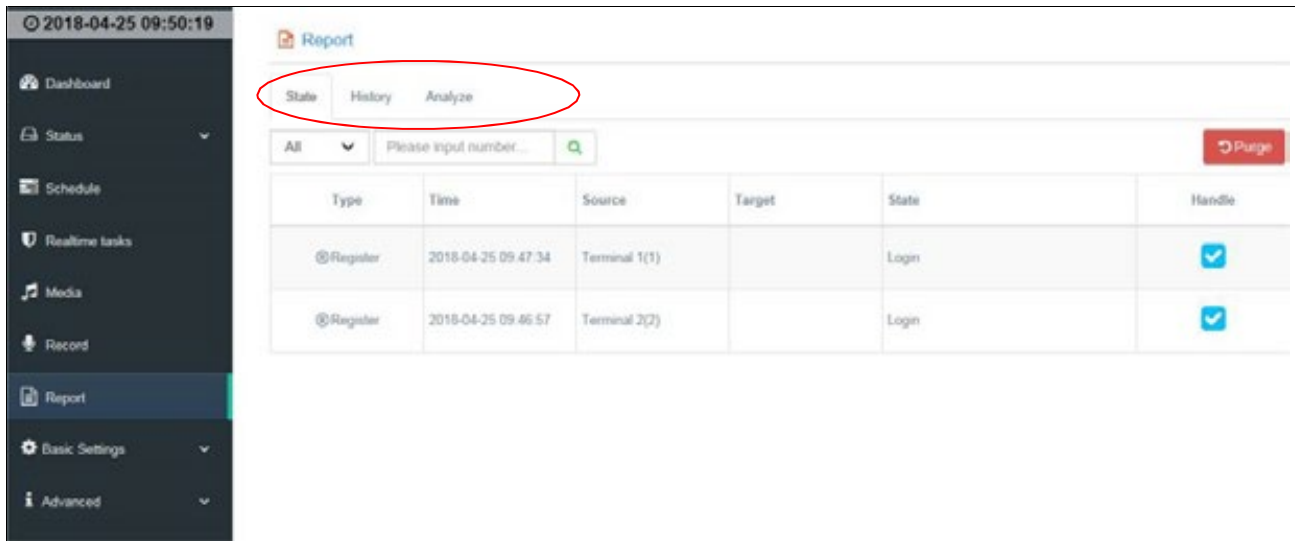


Enquiry/ download/ audition record files

Select file formats and start time, and then click button to enquiry record files, click **【download】** **【music demo】** button or online audition record files.

Report

Record real-time status, history and statistical analysis of the equipment.



Record the events of registration, talk, PA, monitor, alarm and meeting;

- Real-time state
- History
- Analyze

Click “Handle” button to forced stop the corresponding talk, PA or monitor;
Click “Purge” button to delete all records.

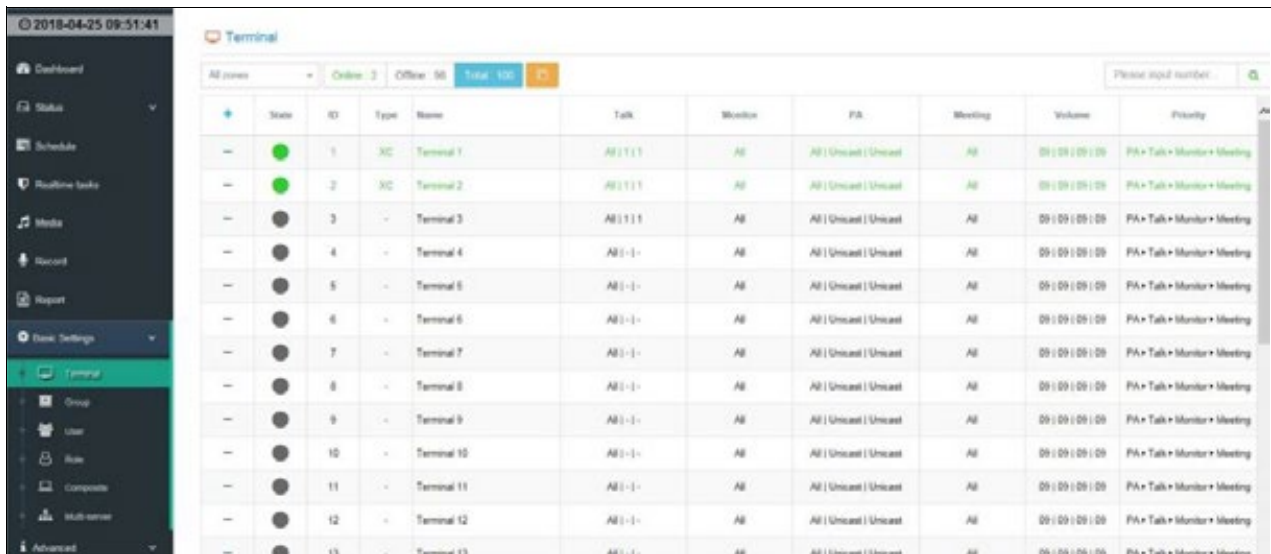
Record working records of all devices, such as registration, talk, PA, and which is support multiple format export'

Statistics the total working times of the terminal in the form of charts or data views.

Basic settings

Terminal management

Terminal settings can be operated at the time of installing software, you can add terminal/ modify terminal/delete terminal in the terminal management interface.



Add terminal

Enter into **【Basic settings】—【Terminal management】**—click “Add”⁺ to add terminals (or double click the terminal and modify terminal attribute), set basic attribute/ talk attribute/ monitor attribute/ PA attribute/ volume/ task priority of terminals.

| No. | Description | Diagram |
|-----|---|---------|
| 1 | <p>“Basic” attribute</p> <p>①Set terminal ID and name.</p> <p> Note: terminal ID is unique, can not repeat with other host numbers. It is suggested to use a positive integer starting from 1 as the terminal No.</p> <p>②Terminal password: set terminal password.</p> <p>③Bind Video : it can bind the built in camera of terminal or video of environment camera gun. After binding well, bind videos can be viewed in the the terminal status-video view.</p> <p>Video address format is rtsp://username: password@IP address: port; (eg.rtsp://admin:123@192.168.1.101:554)</p> <p>Bind more than one video address, please divided by \$ (eg. rtsp://admin:123@192.168.1.101:554\$rtsp://admin:123@192.168.1.102:555)</p> | |
| 2 | <p>“Talk” Attribute</p> <p>Call target: set terminal call map, at most point 5 (when the target is busy or power off, call will automatically transfer to the next target); if you need fixed call to the terminal, please point all 5 targets to this terminal.</p> <p>Extension call target: double click terminal button, target terminals can be set in the “ExCall Target” (left button corresponds to call target, right button corresponds to extend call target), the principle is consistent with the call target.</p> <p>Transfer time: when target is busy or power off, call will automatically transfer to the next target time, time range can be set to 0-120s.</p> <p> Note: if you need set more than one target terminal ID, please divided by English comma “,”.</p> | |

Talk range: set talk permissions of terminals, it is suggested to check all.

3 “Monitor” attribute

Monitor terminal and monitor permissions can be set in the monitor attribute, check authorized terminals in the “Monitor range”.

4 “PA” attribute

Broadcast permissions of terminals and the transmission mode of receiving and sending broadcast can be set on the PA attribute.

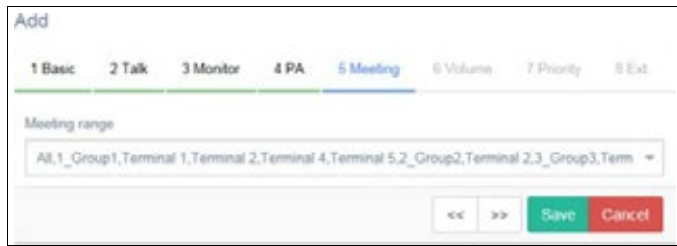
The system send audio resource to terminal by default.

Compare unicast and multicast

| Name | Explanation | Advantages | Disadvantages |
|------------------|--|--|---|
| Unicast | The one to one communication mode between the server and terminal, switcher in the network only transmit data and not copy. If 10 terminals require the same data, the server need to transmit data one by one 10 times. | Server aims at every different customer's requirements to send different data, it is easy to realize personalized service. | Server aims at every terminal to send data flow, server flow = terminal quantity x terminal flow; The server load is heavy in the flow media application of big quantity terminals and terminals with large flow. |
| Multicast | The one to one communication mode between server and terminal, it means that hosts joined the same group can accept all data in this group. Switcher only transmit and copy the required data to demanders. | Client sides needed the same data flow join the same group to share one data flow, which is save the load of the server. | At present, although devices are support multicast transmission, but limit the use of multicast (specially in WAN) |

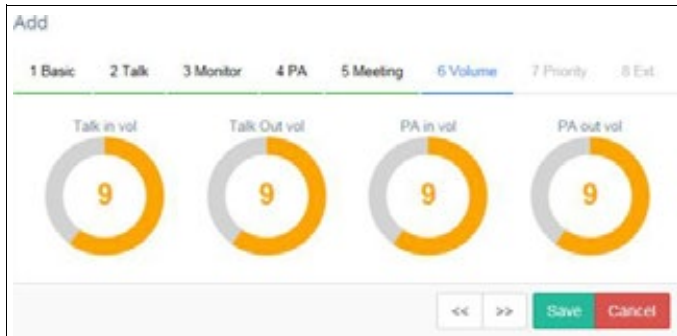
5 Meeting

Meeting authorized terminals can be set on the meeting attribute.



6 Volume

Click circle mark to increase/decrease and set the input/output of intercom/broadcast of the terminal.



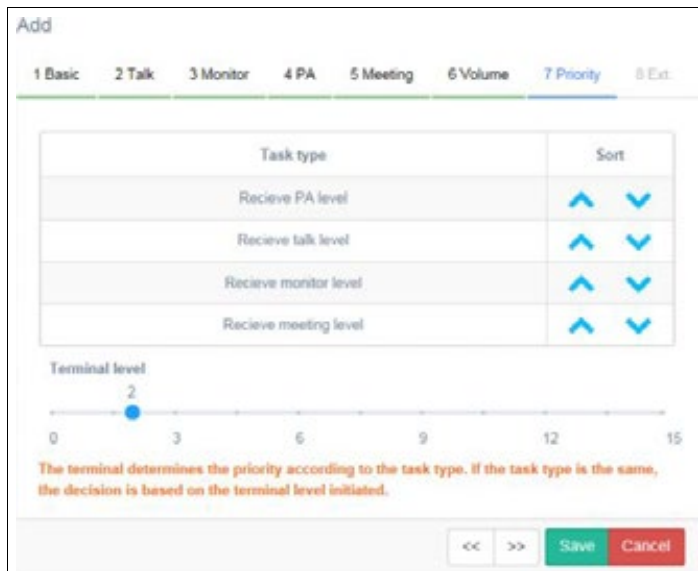
7 Task priority

Set task priority and terminal levels.

When terminals carry out more than one tasks, higher-priority task is able to cut off the lower-priority task. When the task type is same, it is decided by the terminal level.

Task priority ordering: click ^v to rank.

Terminal basic settings: click or pull the on the terminal lever line.



Batch Management

No.

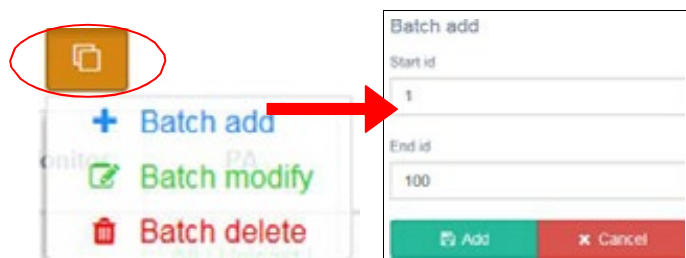
Functions

Diagram

1 Batch add

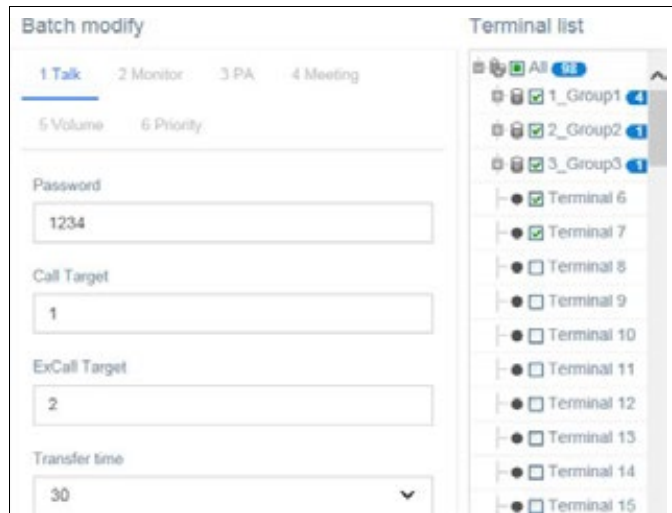
Click "Batch management" button, and select "Batch add", input the start and end ID need to be added in the pop-up dialog box, and then click "Add"

PA system software at most support 1000 PCS terminals, suggest to add 1-1000 terminal No.



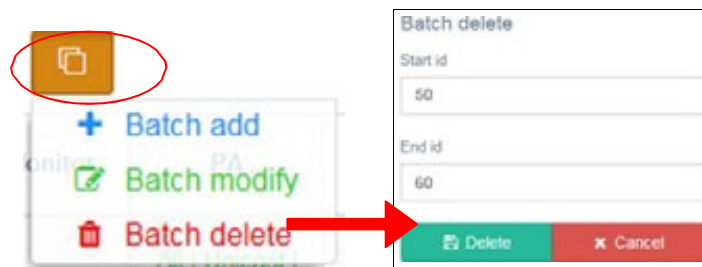
2 Batch modify

Click “batch management” button, and select “ batch modify”, and then check the terminals and terminal attributes need to be modified on the “ Terminal list”



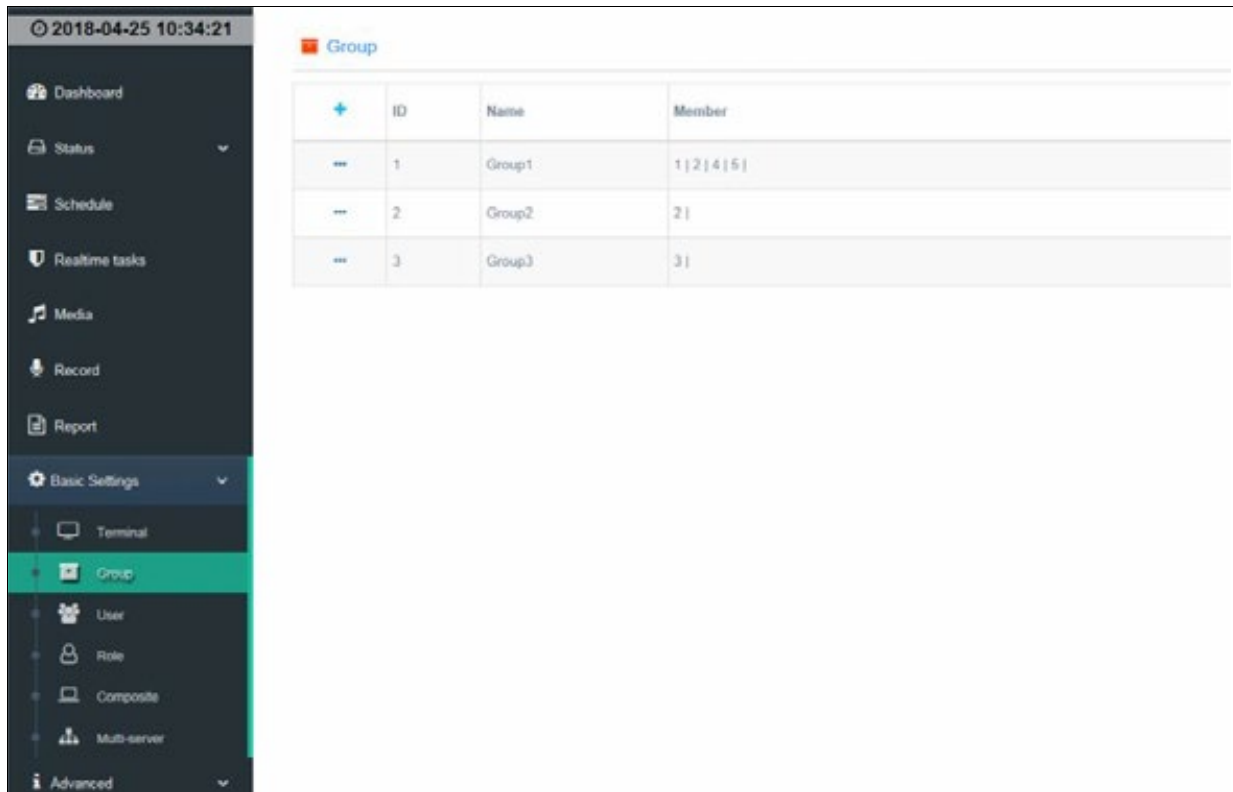
3 Batch delete

Click **【Batch management】** - **【Batch delete】** and input the start and end ID need to be deleted in the pop-up dialog box, and then click delete.



Zone management

On the “Zone” management interface, zones can be divided by the project real situation, zones are mainly used for broadcasting zone selection



Add/ Modify zone

| No. | Functions | Diagram |
|-----|---|---------|
| 1 | <p>Add zone</p> <p>Click add zone“ ” button, input zone name in the zone management interface, at the same time check the terminals needed to be added to the zone and click “Save”.</p> <p> Note: one terminal can be added to more than one zones.</p> | |
| 2 | <p>Modify zone</p> <p>Double click the zone to Modify its name, member.</p> | |

User management

User management can assign login accounts and use permissions to the different operators using the server.

| + | Username | Display | Role |
|---|----------|---------|-------|
| ← | admin | admin | admin |
| ← | yhu1 | yhu1 | yhu1 |

Add role/ Modify role/ delete role

| NO. | Functions | Diagram | | | | | | | | | |
|-----|--|---|--|----------|---------|---|-------|-------|-----|------|------|
| 1 | <p>Add user</p> <p>① Click user “+” button , and then set the user name and task permission in the pop-up task bar;</p> <p>② Check the authorized terminal in the “ Bind terminal” bar;</p> <p>③ Check the authorized server in the “Server” bar</p> <p>Note: click “Apply to all terminal” or “Apply to all servers” to realize one button selection.</p> <p>Bind terminal list: bind central MIC NO.</p> <p>Click “Save” to complete settings.</p> | | | | | | | | | | |
| 2 | <p>Modify user</p> <p>Double click the user to Modify its display name, password, permissions, and other relative information.</p> <p>Note: If the user forgets the password, the administrator can modify the password through “Modify user”.</p> | | | | | | | | | | |
| 3 | <p>Delete user</p> <p>Click the Modify button “...” in front of the user’s name, select “Del user” to delete the user.</p> | <table border="1"> <thead> <tr> <th></th> <th>Username</th> <th>Display</th> </tr> </thead> <tbody> <tr> <td>+</td> <td>admin</td> <td>admin</td> </tr> <tr> <td>...</td> <td>yhu1</td> <td>yhu1</td> </tr> </tbody> </table> | | Username | Display | + | admin | admin | ... | yhu1 | yhu1 |
| | Username | Display | | | | | | | | | |
| + | admin | admin | | | | | | | | | |
| ... | yhu1 | yhu1 | | | | | | | | | |

Role management

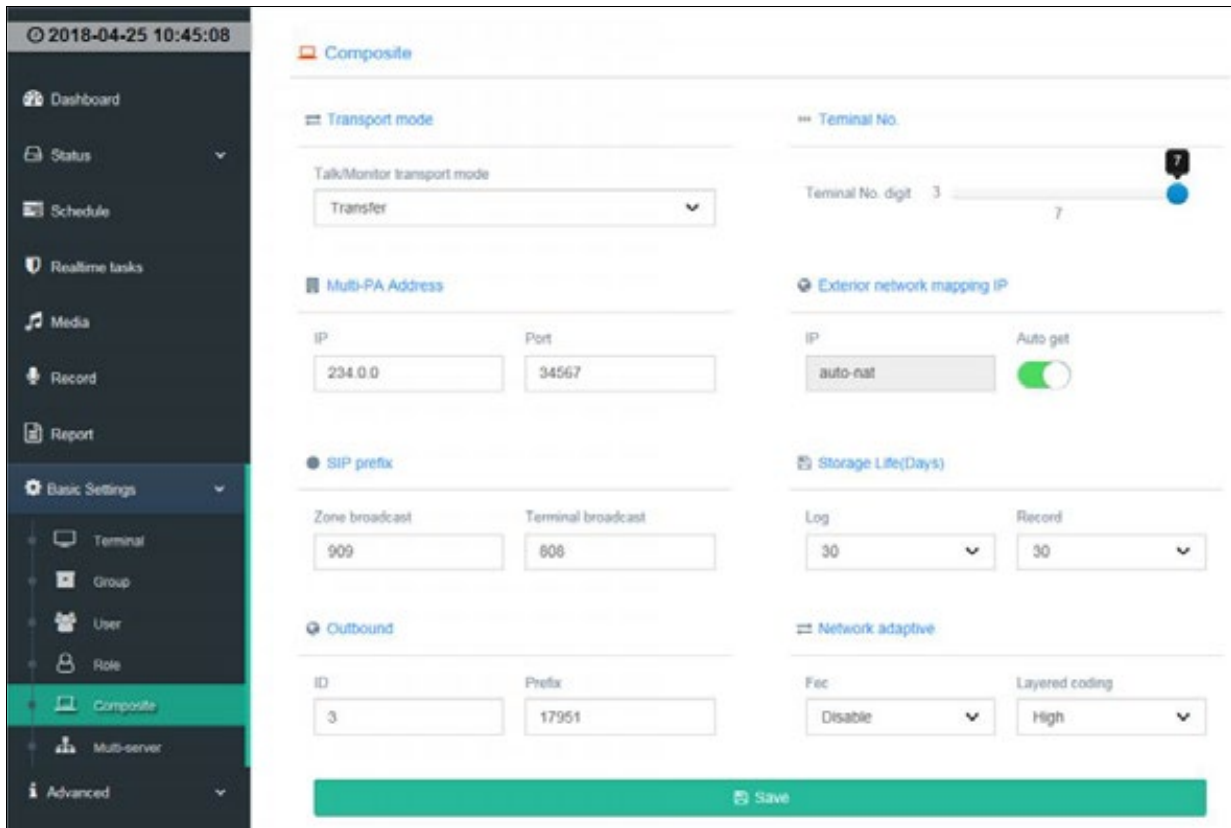
In the role management interface, you can customize roles and assign permissions to roles, and users can only access authorized modules.

| Role | Role level | Modules | | | | | | | | | | | | | | | | | | | | | |
|-------|---------------|-----------|------------|-----------|----------|-----------|------------|----------|----------------|----------------|--------|-------|---------|----------|----------|-----------------|------|------|-----------|------------|-----|-------|---|
| | | Status | | | | | | Report | | Basic Settings | | | | | | System Settings | | | | | | | |
| | | Dashboard | Table View | Grid View | Map View | Scan View | Video View | Schedule | Realtime tasks | Media | Record | State | History | Analysis | Terminal | Group | User | Role | Composite | Multi-user | SDK | About | |
| user | Regular user | ✓ | ✓ | ✓ | ✓ | ✓ | ✓ | ✓ | ✓ | ✓ | ✓ | ✓ | ✓ | ✓ | ✓ | ✓ | ✓ | ✓ | ✓ | ✓ | ✓ | ✓ | ✓ |
| user | Regular user | ✓ | ✓ | ✓ | ✓ | ✓ | ✓ | ✓ | ✓ | ✓ | ✓ | ✓ | ✓ | ✓ | ✓ | ✓ | ✓ | ✓ | ✓ | ✓ | ✓ | ✓ | ✓ |
| Admin | Administrator | ✓ | ✓ | ✓ | ✓ | ✓ | ✓ | ✓ | ✓ | ✓ | ✓ | ✓ | ✓ | ✓ | ✓ | ✓ | ✓ | ✓ | ✓ | ✓ | ✓ | ✓ | ✓ |
| Admin | Administrator | ✓ | ✓ | ✓ | ✓ | ✓ | ✓ | ✓ | ✓ | ✓ | ✓ | ✓ | ✓ | ✓ | ✓ | ✓ | ✓ | ✓ | ✓ | ✓ | ✓ | ✓ | ✓ |

Add role/Modify role/ delete role

| NO. | Functions | Diagram |
|-----|---|---------|
| 1 | <p>Add role</p> <p>Click “” button in add role, and then set the role name and task permission in the pop-up task bar;</p> <p>Self-built task: only view the planned tasks of the user;</p> <p>All tasks: view planned tasks of all users;</p> <p>Module permissions: check the role owned module permissions;</p> <p>Click “Save” to complete settings.</p> | |
| 2 | <p>Modify role</p> <p>Double click the role to Modify its display name, password, permissions, and other relative information.</p> | |

System settings



| NO. | Functions | Diagram |
|-----|---|---------|
| 1 | <p>Transmission mode</p> <p>Server transfer: intercom and monitor data are transferred by server, such as from terminal 1 to server to terminal 2</p> <p>Direct mode: intercom and monitor data are not transferred by server, such as from terminal 1 to terminal 2 , without server.</p> | |
| 2 | <p>Terminal NO. settings</p> <p>Set terminal number, at most support 7 numbers</p> | |
| 3 | <p>Multicast address</p> <p>When there are multiple sever in the LAN and different server initiate multicast, it is necessary to fill different IP address and port to avoid interference</p> | |

4 Exterior network mapping IP

When interior network is different with exterior network, setting the exterior network mapping IP.

5 SIP prefix

Standard SIP devices access to this system, the prefix numbers are needed to use broadcast function.

6 Exterior line configuration

If the system needs to dial an external line, it needs to make relevant configuration. Terminal number: ID number of telephone gateway; Dialing prefix: prefix to call an outside line;

7 Storage life (days)

Set the time of running log and record, support forever storage

Multi-server

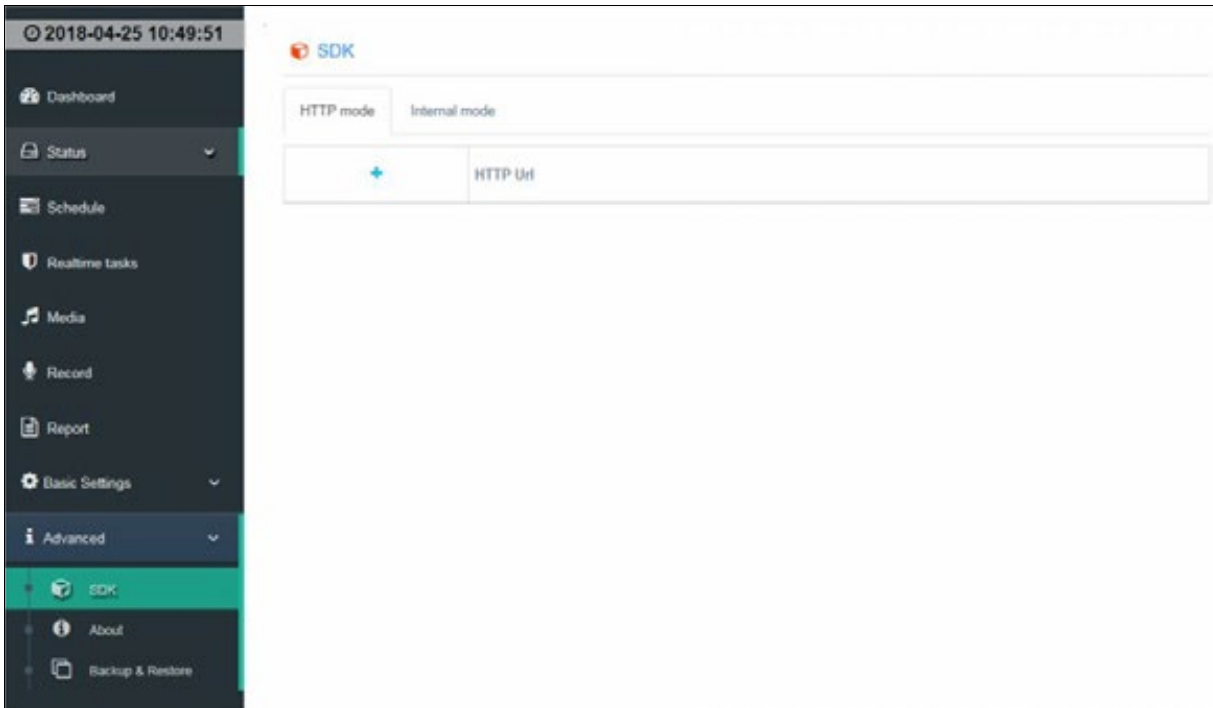
Add server on the multi-server to realize across server communication.

Add server: click add “+” to add server and to set ID, name, IP, Port.

Using proxy: the access to other server data from the server terminal needs to obtain interconnected server data through this service agent (for example, can not get data from the interconnected server to be forwarded by the server agent).

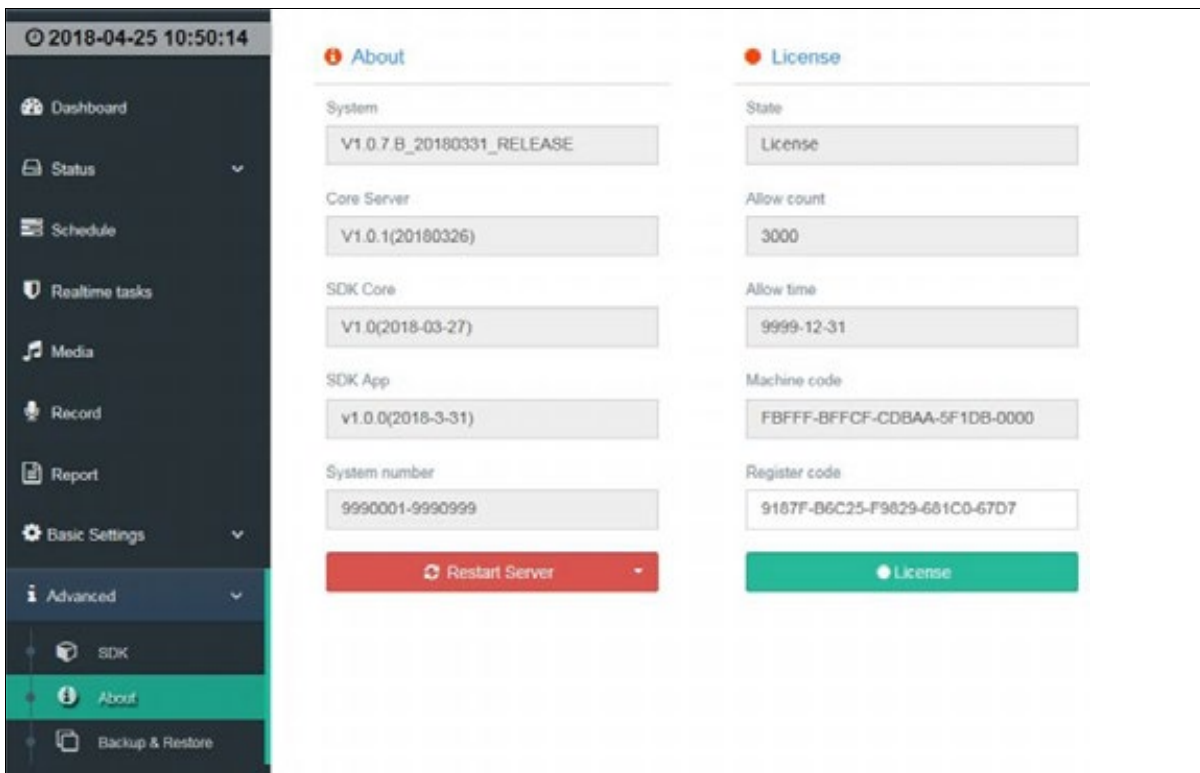
Advanced settings

SDK Configuration



HTTP mode: the third access platform is Http interface access mode;
 Internal mode: the third access platform is original internal access mode.

Version information



Version information

Display server version, core server version etc, click "Restart Server" to restart server;

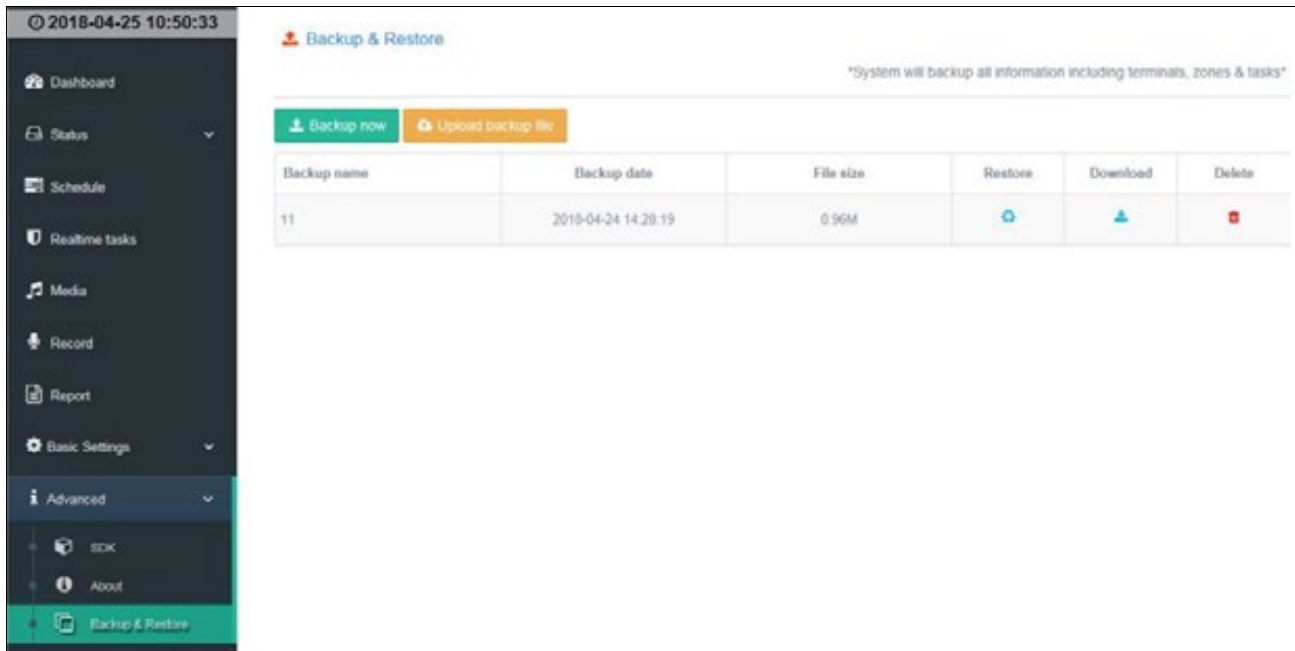
License

Please offer the machine code to acquire the license of official server from supplier.

Backup/Restore

Back up all terminal/zone/tasks/user's information. When the data is destroyed, the data can be restored by the backup (for example, when the coverage is installed, the system parameter data will be modified, the user's data can be backed up before the coverage is installed, and the data will be covered after the installation is installed).

Click "Backup now" to backup data and save the file on the server automatically. Click "Restore" to restore the current data, support download. When needed, click "upload backup file" to restore the data.



FAQ

| Fault phenomenon | Fault reasons & exclude |
|---------------------------------|---|
| Why all terminals can't login? | <ol style="list-style-type: none"> 1. The firewall will prevent the server software access to the network by default, and it result in the server can't work normally. Therefore it's required to turn off the firewall or add the server software program is out of firewall prevent list. 2. The server IP address and the terminal set [server IP] is different. 3. The server is closed. |
| Why some terminals can't login? | <ol style="list-style-type: none"> 1. Under the cross-network, the terminal haven't set the gateway properly. 2. Network does not work, we suggest using ping command test. The objective testing method is using the terminal connected cable insert to a computer (and set the terminal IP address), then Ping command to test connectivity on the server. 3. Please use administrator to run the server underwin7 operation system. |



sieraelectronics.com